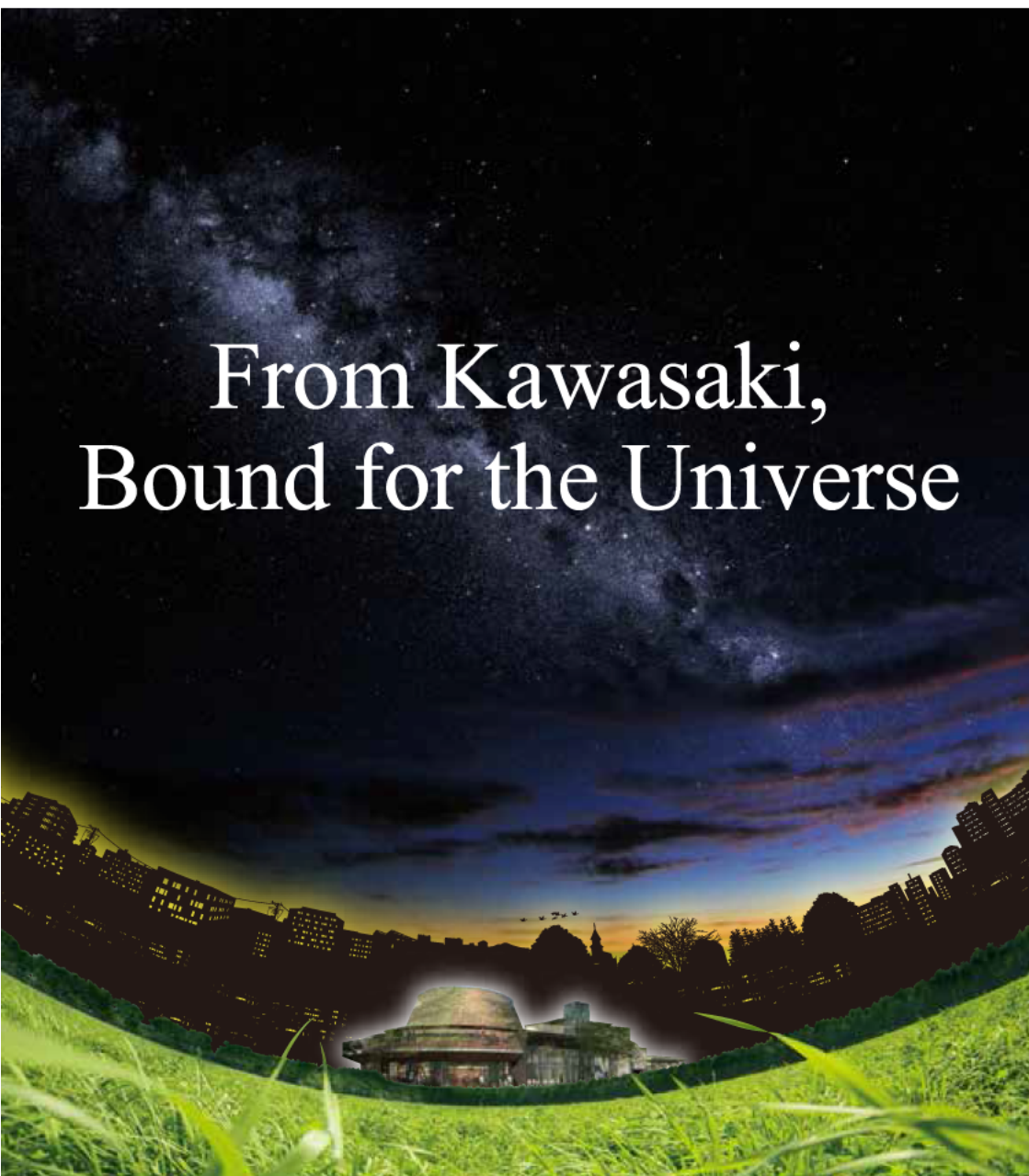


# Kawasaki Municipal Science Museum

From Kawasaki,  
Bound for the Universe



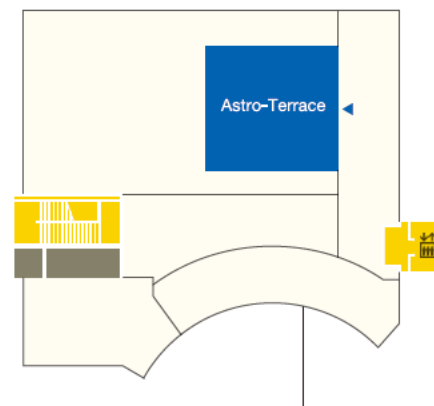


I am the mascot of  
Kawasaki Municipal Science Museum.  
My name is "Kawasaki Purin".  
I was born from  
the publicly offered mascot ideas.  
I'm going to guide you  
through the Science Museum.  
Please enjoy the tour!

# FLOOR GUIDE

3F

- Astronomical Observation Space "Astro-Terrace"

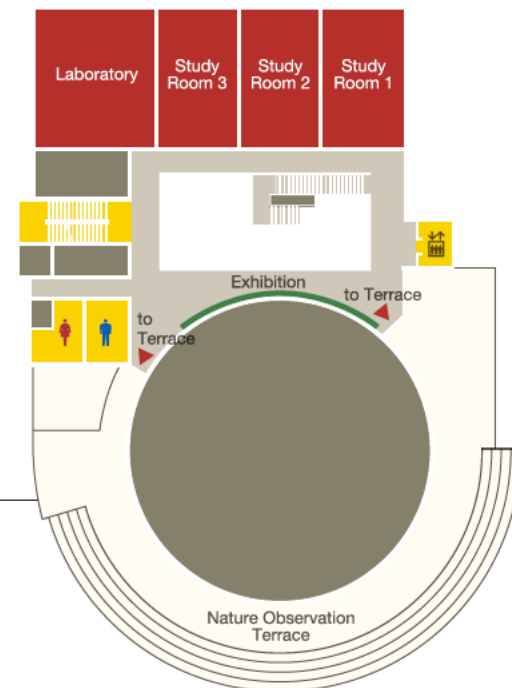


◀ 3F

2F

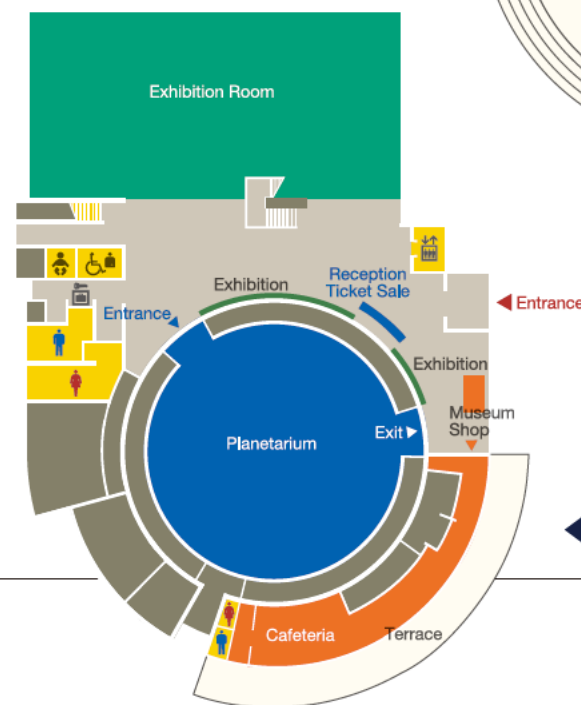
- Laboratory, Study Room
- Nature Observation Terrace

2F ▶



1F

- Hall
- Planetarium
- Exhibition Rooms
- Cafeteria



◀ 1F



# Let's Experience Nature, Astronomy, and Science!



## Nature Experience

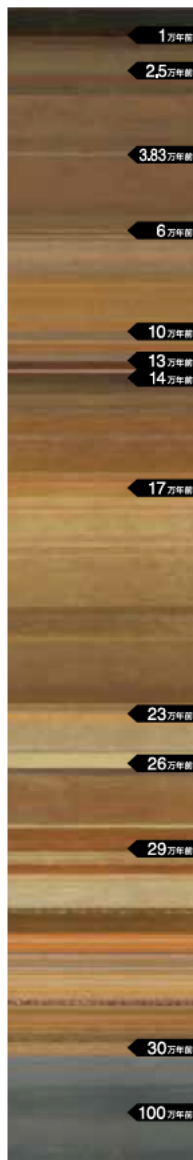
Ikuta Ryokuchi, where the Science Museum is located, is the largest treasure trove of greenery in the city. There are many must-see spots for all four seasons. After you learn about nature in the renewed exhibition rooms, go out to look for real nature!

### the five corners

Land of Kawasaki / Nature in the Hilly Terrain / Nature in the Town  
Nature in the Tama River / Ikuta Ryokuchi Gallery

**8-meter high geological layer sample set up at the entrance of the exhibition room.....>**

This is a model of the Ikuta Ryokuchi geological layers compressed to one fifth of the real strata. The "Land" corner gives detailed information on the geological layers of Ikuta Ryokuchi. Fossils found in Kawasaki are also exhibited here. Nature in Kawasaki is also introduced via a lot of samples of insects, plants, etc. under the themes of "Hilly Terrain", "Town", "Tama River", and "Ikuta Ryokuchi". In addition, participatory-type study courses are held for both adults and children, such as the "Ikuta Ryokuchi nature observation tours", and "nature workshops" in the exhibition room. Why don't you join these events and enjoy a nature experience together with others?



## Astronomical Experience

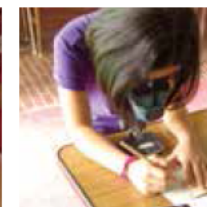
The planetarium is equipped with a new-type MEGASTAR, specially developed for Kawasaki City, and the digital space engine Uniview. These allow you to enjoy a beautiful starry sky of the world's highest quality.

The astronomical exhibition provides an easy-to-understand explanation on the earth where we live, the solar system objects, the galactic system, and the structure of the whole universe. The exhibition may fill you with a dream or romantic feeling about the universe. On the rooftop Astro-Terrace, you can observe the surface of the sun, and stars and planets even in the daytime through the computer controlled telescopes. Nighttime star observation sessions are also held. Make an observation of the moon surface, nebulae and clusters of stars directly with your own eyes.



## Scientific Experience

Through various experiments, you will feel science much closer at hand.



The scientific experiment classes are held at the laboratory and the entrance hall. Enjoy marvelous and interesting experiences of science.





# PLANETARIUM



## MEGASTAR-III

MEGASTAR-III FUSION is the newest model of MEGASTAR, which has the reputation for creating the “world’s highest-quality starry sky”. It is a special next-generation model newly developed for the Kawasaki Municipal Science Museum. It can represent even those stars that cannot be seen with the naked eyes.

In addition to beauty of the starry sky created by the existing MEGASTAR, the new model pursued reality and naturalness of the night sky. It re-creates more precise differences of brightness among stars, as well as their colors. The name “FUSION” contains a special meaning. That is, the technology to literally fuse together the optical planetarium technology, which depicts an exquisite starry sky with high fidelity, and the digital planetarium technology, which enables to depict all visual images and spatial representations. It is the technology to re-create images of the universe that were impossible before.

Surpassing the conventional technology to use optical planetarium and digital planetarium concurrently, the FUSION planetarium creates a realistic starry sky of the world’s highest quality through its new projection system and characteristics. It is able to project scenery in which myriad of stars created on the dome-shaped screen twinkle in their own colors, travel through the sky, and finally fade away over the mountain ridges. Thus, the FUSION re-creates an atmosphere you experience under the real night sky, which was impossible in the conventional planetarium.



“Uniview” and “Stella Dome Pro” are able to represent images of the universe faithfully based on the actual observation data, and they are introduced into the digital planetarium. You will have an experience as if you fly out into the space from Kawasaki, and travel from the solar system to beyond the galaxy.

The projected images through the new system are explained by a commentator on the spot, who accordingly incorporates different themes every month, such as timely astronomical events and wonders of space.

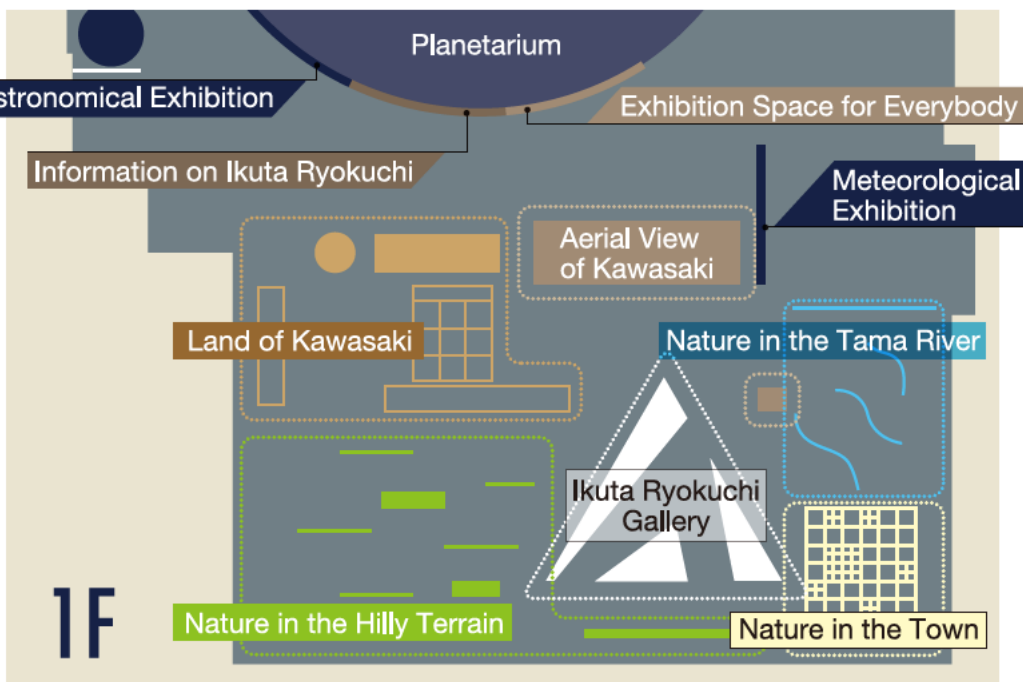
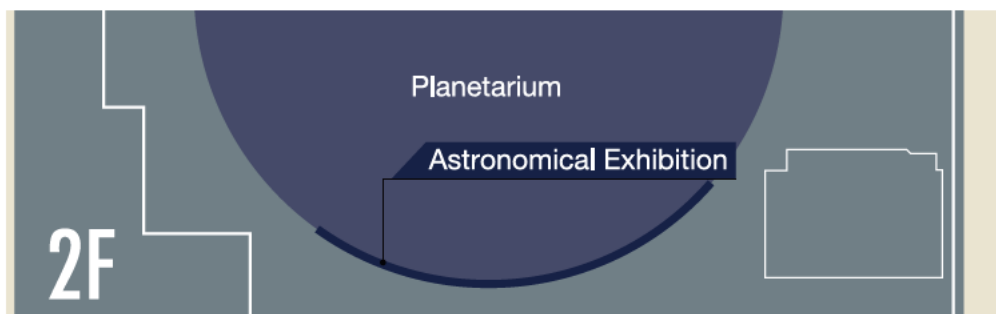
It is also possible to project programs made by elementary/junior high school students or citizens, using the planetarium programming software “Stella Dome School” which was newly developed by Kawasaki City.

# EXHIBITION

In the exhibition room on the first floor, Nature in Kawasaki is introduced through the five corners of "Land of Kawasaki", "Nature in the Hilly Terrain", "Nature in the Town", "Nature in the Tama River", and "Ikuta Ryokuchi Gallery".

In the Entrance Hall there are corners of the "Astronomical Exhibition", which is focused on planets, and "Meteorological Exhibition". There is also the "Exhibition Space for Everybody" which can be utilized for special exhibitions and presentations by citizens.

The second floor houses the "Astronomical Exhibition", which explains the solar system and the whole universe. Through these exhibitions, re-discover nature, which is close at hand to you. And look for various natural phenomena you have found at this Science Museum in the actual fields.



## ■Exhibition room

Opening time 9:30~17:00

Admission fee No charge

Closure day Every week Monday  
(The day following the  
public holiday)

## ■Planetarium

Show time

Weekday 15:00 (For general)

Saturday, Sunday and Public holiday

10:30 (For general) 12:00 (For children)

13:00 (For general) 14:30 (For children)

15:30 (For general)

Planetarium Participation fees	Individual	Organization
General (Aged 65 and over removes.)	400yen	320yen
College student, High school student, Aged 65 and over	200yen	160yen
Below a junior high school student	No charge	No charge

## <Transportation Information>

### ○By train

**15-minute walk** from the south exit of Mukogaoka-Yuen Station, Odakyu Line

**25-minute walk** from Noborito Station, JR Nanbu Line

### ○By bus

**From Musashi Mizonokuchi Station, south exit:** Municipal bus Mizo 19 to "Mukogaoka-Yuen Station East Exit", 20-minute ride to "Ikuta Ryokuchi Iriguchi" and 5-minute walk from the bus stop

**From Mukogaoka-Yuen Station, east exit:** Municipal bus to "Mizonokuchi Station South Exit", or to "Haragayato", 5-minute ride to "Ikuta Ryokuchi Iriguchi" and 5-minute walk



# Kawasaki Municipal Science Museum

<http://www.nature-kawasaki.jp/>

〒214-0032 川崎市多摩区枋形7-1-2  
tel.044-922-4731 fax.044-934-8659